

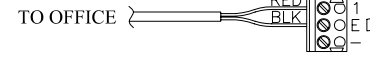
PTI INTEGRATED SYSTEMS PROPRIETARY
THIS DOCUMENT AND THE INFORMATION DISCLOSED HEREIN ARE
PROPRIETARY DATA OF PTI INTEGRATED SYSTEMS. NEITHER THIS
DOCUMENT NOR THE INFORMATION CONTAINED HEREIN SHALL BE
REPRODUCED, USED OR DISCLOSED TO OTHERS WITHOUT THE
WRITTEN AUTHORIZATION OF PTI INTEGRATED SYSTEMS.

PT REV	DESCRIPTION	BY	DATE
A	APEX BOARD UPDATED.	LAC	11/3/03

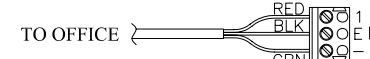
SEE 'INTERCOM JUMPER
CONFIGURATION TABLE'
FOR PROPER
JUMPER PLACEMENT

INTERCOM JUMPER CONFIGURATION TABLE			
INTERCOM TYPE	APEX JUMPER CONFIGURATION		
NEM (ALL)	J7 NEM LEF	J6 NEM LEF	J3 LEF Single Master All Others
LEF (ALL BUT SINGLE MASTER STATION)	J7 NEM LEF	J6 NEM LEF	J3 LEF Single Master All Others
LEF (SINGLE MASTER STATION)	J7 NEM LEF	J6 NEM LEF	J3 LEF Single Master All Others

LEF (EXCEPT SINGLE MASTER
STATION) AND ALL NEM
INTERCOM TYPES WIRING

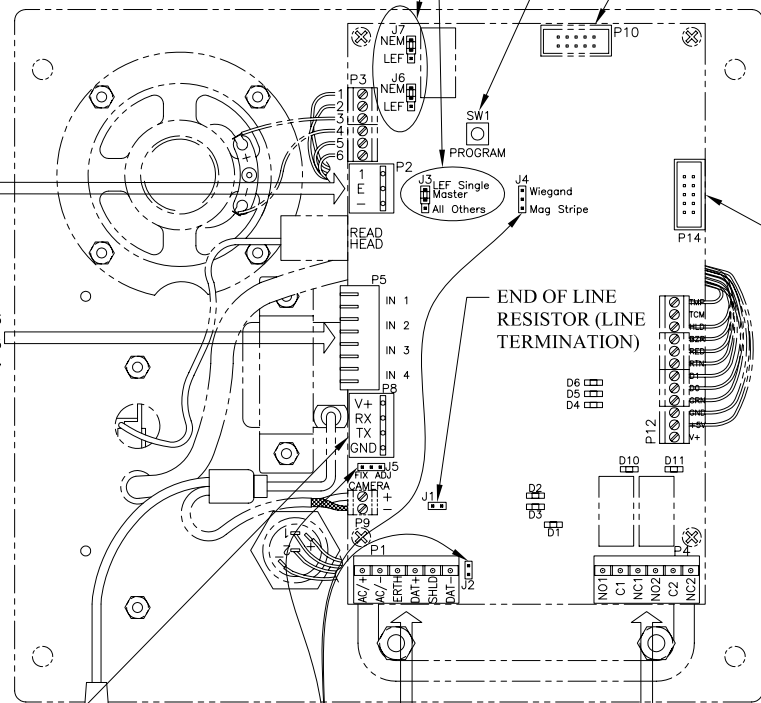


- OR -



LEF SINGLE MASTER
STATION WIRING

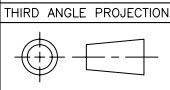
SPARE MUX CHANNELS
-- OR --
EXTENDED DOORS CONTROLS:
IN 1 = DOOR CONTACT
IN 2 = REQUEST TO EXIT
IN 3 = PRESENCE INPUT DETECTOR
IN 4 = INTERCOM CALL
NOTES:
1) DRY CONTACT INPUTS ONLY FOR
BOTH SPARE MUX CHANNELS AND
EXTENDED DOORS WIRING.
2) COMMON WIRES CONNECTED TO
EVEN NUMBERED TERMINALS OF
CONNECTOR (TERMINAL NUMBERS
SHOWN ABOVE FOR REFERENCE).



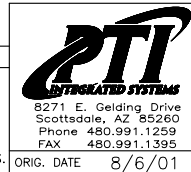
LED DESCRIPTIONS
1) LEDES D1 THRU D6:
COMMUNICATIONS BEFORE OPTICAL ISOLATION:
D1 = RS-485 RX
D2 = RS-485 TX
D3 = RS-485 ENABLE
COMMUNICATIONS AFTER OPTICAL ISOLATION:
D4 = RS-485 RX
D5 = RS-485 TX
D6 = RS-485 ENABLE
2) LEDES D10 AND D11:
D10 = RELAY 1 (K1) IS ACTIVATED
D11 = RELAY 2 (K2) IS ACTIVATED

NOTE: IF 2 GATES:
ARM = RELAY1
SLIDE = RELAY2
RELAY2 CAN BE TIMED.

TO VIDEO DISPLAY
EQUIPMENT



UNLESS OTHERWISE SPECIFIED
ALL DIMENSIONS IN INCHES.
TOLERANCE: ±N/A
ANGLE TOLERANCE (DEG): ±N/A
REMOVE BURRS & SHARP EDGES.



DRAWING DESCRIPTION		
APEX WIRING DIAGRAM		
SIZE/SCALE CINONE	DWG NO.	DWG REV A.00
ORIG. DATE 8/6/01	DRAWN BY L. CAMPANELLI	SHEET 1 OF 1